



2011 470 National Championships
Incorporating a round of the 470 World Selection

420 Open Regatta

29th to 31st January, 2011

Takapuna Boating Club

Takapuna, Auckland, New Zealand

The Organising Authority is the Takapuna Boating Club.

NOTICE OF RACE

1 RULES

- 1.1 The regatta will be governed by the rules as defined in *The Racing Rules of Sailing*.
- 1.2 The Yachting New Zealand Safety Regulations Part 1 shall apply. See: <http://www.yachtingnz.org.nz/Upload/UserDocument/Safety%20Regs%20Part%201%202009%20Final.doc>
- 1.3 For protests where only a Rule of Part 2, *When Boats Meet*, or Rule 31, *Touching a Mark*, is alleged to have been broken an arbitration hearing will be offered prior to any formal hearing.

2 ADVERTISING

Boats may be required to display advertising chosen and supplied by the organising authority.

3 ELIGIBILITY AND ENTRY

- 3.1 The regatta is open to all boats of the International 470 class and International 420 class that comply with their class rules.
- 3.2 Eligible boats may enter by completing the attached entry form and sending it, together with the required fee, to:

Takapuna Boating Club
PO Box 33 062
Takapuna
North Shore City 0740

by 21st January, 2011.

- 3.3 Late entries may be accepted at the Organising Authority's discretion up to 1100 hours on Saturday, 29th January 2011.
- 3.4 To be eligible to compete in this event each entrant and crew member shall be a financial member of a club recognised by the entrant and crew member's national authority.
- 3.5 Each entrant and crew member shall be shall be a current member of the New Zealand 470 Class Association or the New Zealand 420 Class Association.

4 CLASSIFICATION

There are no classification requirements in accordance with RRS 79.

5 FEES

- 5.1 Entry fees are;
- | | |
|-----------|----------------|
| 470 class | \$150 per boat |
| 420 class | \$120 per boat |
- 5.2 Entries received and/or paid after 21st January, 2011 shall be subject to an additional late entry fee of \$50.
- 5.3 Payment can be made by:
- Cheque – made payable to Takapuna Boating Club
- Write your name and sail number on the reverse of the cheque.

6 QUALIFYING SERIES AND FINAL SERIES

The regatta will consist of a single series. There will not be a qualifying and final series.

7 SCHEDULE

7.1 Registration:

Day and date: Saturday, 29th January, 2011
From 0800 to 1100 at the Takapuna Boating Club.

7.2 Race Schedule:

The event shall consist of a series of up to 10 races – (refer schedule below).

Day	Date	Time of First Warning Signal	
Day 1	Sat 29 th January	1200	Up to 3 races
Day 2	Sun 30 th January	1100	Up to 4 races
Day 3	Mon 31 st January	1100	Up to 3 races

- 7.4 Races may be sailed back to back.
- 7.5 On Monday 31st January, 2011 no warning signal will be made after 1500 hours.

8 MEASUREMENT

- 8.1 Each boat shall produce a valid measurement certificate at registration.
- 8.2 Competitors in the 470 Women shall place a red rhombus on each side of their sail (back to back). The rhombus size, shape and location shall comply with the class rules.
- 8.3 All sails shall have the full unique official sail number and sailors from other than New Zealand shall have national letters on their sails in accordance with the class rules and RRS.

9 SAILING INSTRUCTIONS

The sailing instructions will be available at registration on Saturday 29th January, 2011 at Takapuna Boating Club.

10 VENUE

Appendix A shows the location of the regatta venue and the approx location of the racing area.

11 COURSES

The courses to be sailed will be windward/leeward or trapezoid courses.

12 PENALTY SYSTEM

Appendix P may apply.

13 SCORING

- 13.1 Five (5) races are required to be completed to constitute a series.
- 13.2 (a) When fewer than 6 races have been completed, a boat's series score will be the total of her race scores.
(b) When 6 or more races have been completed, a boat's series score will be the total of her race scores excluding her worst score.
- 13.3 The 470 men and women will sail together but will be scored separately.

14 SUPPORT BOATS

- 14.1 All support boats must register with the Organising Authority at registration and nominate the boat(s) they support.
- 14.2 Team leaders, coaches, and other support personnel shall comply with NOR 15.

15 PROHIBITED ANCHORING AREA

- 15.1 Boats associated with the championship and registered support boats shall comply with the New Zealand Government Regulation "Submarine Cables and Pipelines Protection Act 1996". This regulation prohibits anchoring in the area shaded in the No Anchoring area in Appendix 1 and defined on charts NZ532 and NZ5322.
- 15.2 Any boat or support craft breaking NOR 15.1 will be subject to a hearing resulting in a report to their National Authority and ISAF. As a consequence, a competitor associated with the coach of the support craft may be disqualified from the race closest to the time of the infringement.

16 STORAGE AND LAUNCHING

- 16.1 Boats may be kept on the reserve adjacent to the Takapuna Boating Club.
- 16.2 Unless otherwise directed by the Organising Authority, all competing boats and equipment shall be launched and retrieved from Takapuna Beach.

17 RADIO COMMUNICATION

Except in an emergency, a boat shall neither make radio transmissions while racing nor receive radio communications not available to all boats. This restriction also applies to mobile telephones.

18 PRIZES

- 18.1 Prizes will be awarded for Open, Women and Youth categories as follows:
- Where entries exceed 10 boats, 1st, 2nd and 3rd places will be awarded prizes,
 - Where 5 or more boats are entered, 1st and 2nd will be awarded prizes,
 - Where less than 5 boats are entered, 1st prize will be awarded.
- 18.2 Spot prizes may be awarded.

19 RIGHTS TO USE NAME AND LIKENESS

In signing the Entry Form and participating in the regatta a competitor automatically grants the Organising Authority and the sponsors of the regatta the right in perpetuity to make, use and show, from time to time and at their discretion, any motion pictures, still pictures and live, taped or film television and other reproductions of him/her during the period of the competition for the said regatta in which the competitor participates and in all material related to the said regatta without compensation.

20 DISCLAIMER OF LIABILITY

Competitors participate in the regatta entirely at their own risk. See rule 4, *Decision to Race*. The organizing authority will not accept any liability for material damage or personal injury or death sustained in conjunction with or prior to, during, or after the regatta.

21 INSURANCE

Each participating boat shall be insured with valid third-party liability insurance with a minimum cover of \$500,000 NZD per event or the equivalent.

22 FURTHER INFORMATION

For further information please contact:

Janet Watkins
09 483 9848

Takapuna Boating Club
The Strand
Takapuna
North Shore

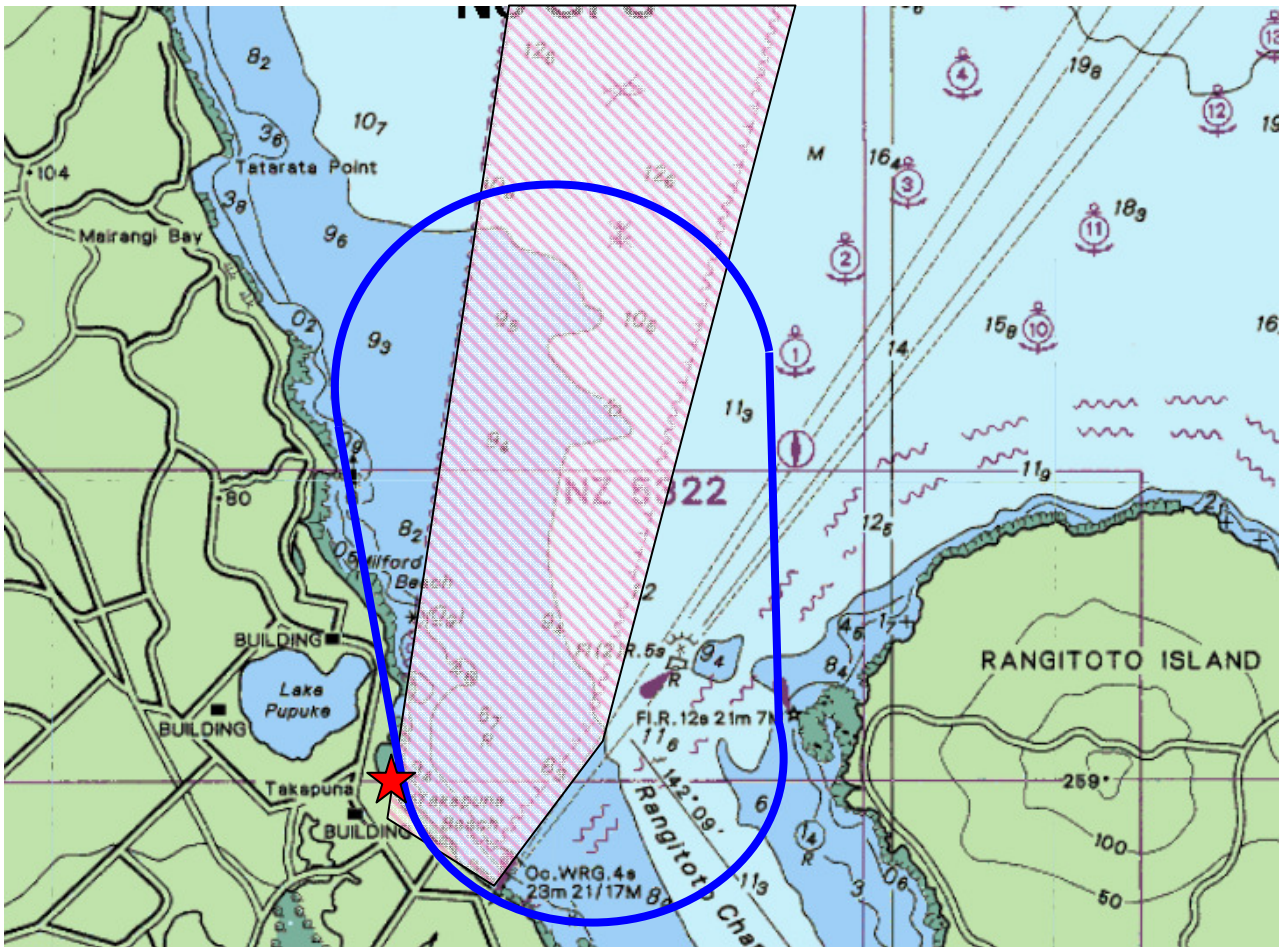
Takapuna Boating Club
PO Box 33062
Takapuna
North Shore City 0740


Phone: +64 9 489 6941
Fax: +64 9 486 0747


email: sailing@takapunaboating.org.nz
web-site: <http://www.takapunaboating.org.nz>


APPENDIX A

LOCATION OF TAKAPUNA BOATING CLUB and APPROX RACING AREA



 Takapuna Boating Club location

 Approximate course area

 Prohibited anchoring area